



ABGC

2015 Annual Business Meeting

Anne C. Madeo, President

October 22, 2015
1:00 pm – 1:30 pm

PO Box 14216 | Lenexa, KS 66285 | Phone: 913.895.4617 | Fax: 913.895.4652 | abgc.net



ABGC Agenda

- Welcome & Introductions
- Secretary/Treasurer's Report
- President's Report
 - Election results
 - 2016 Examination Update
 - 2015 Examination Report
 - 2015 Accomplishments
 - New/Ongoing Initiatives for 2016
- Open for Questions



The 2015 ABGC Board of Directors



Left to right:

First row

Sheila O'Neal, Executive Director
Stephanie Kieffer, MS, CGC, Director At-Large
Anne C. Madeo, MS, CGC, President
Karen Powell, MS, CGC, CEC Board Liaison

Second row

Susan Hahn, MS, CGC, Treasurer
Amy Lytle, Public Member
Sharon Aufox, MS, CGC, Director At-Large
Beth Denne, MS, CGC, President Elect



Thank You!

Susan Hahn, MS, CGC





Susan Hahn, MS, CGC

SECRETARY/TREASURER'S REPORT

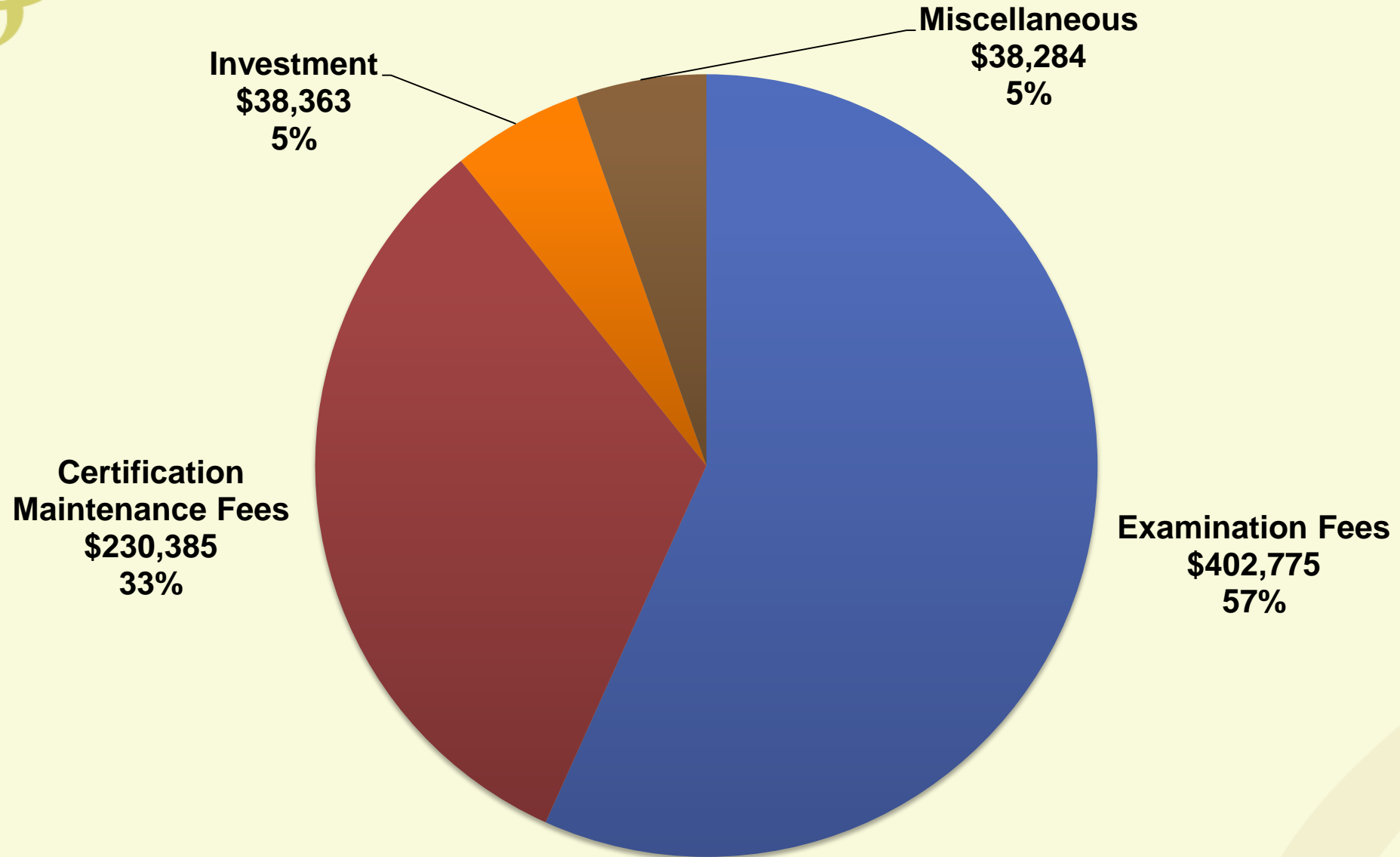


Secretary/Treasurer's Report

- 2014 Year End Financial Statements
- Revenues
- Expenses

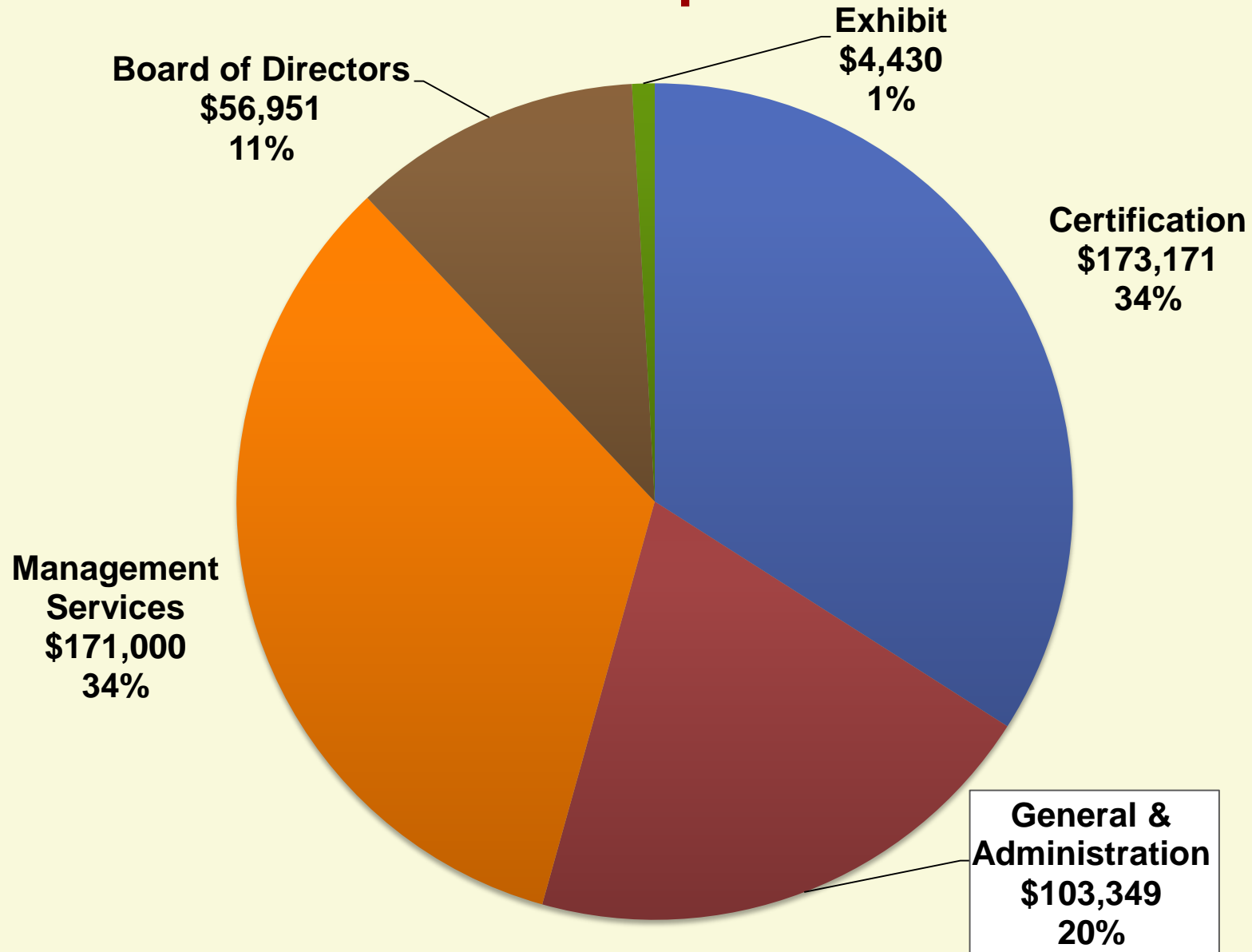


2014 Revenue



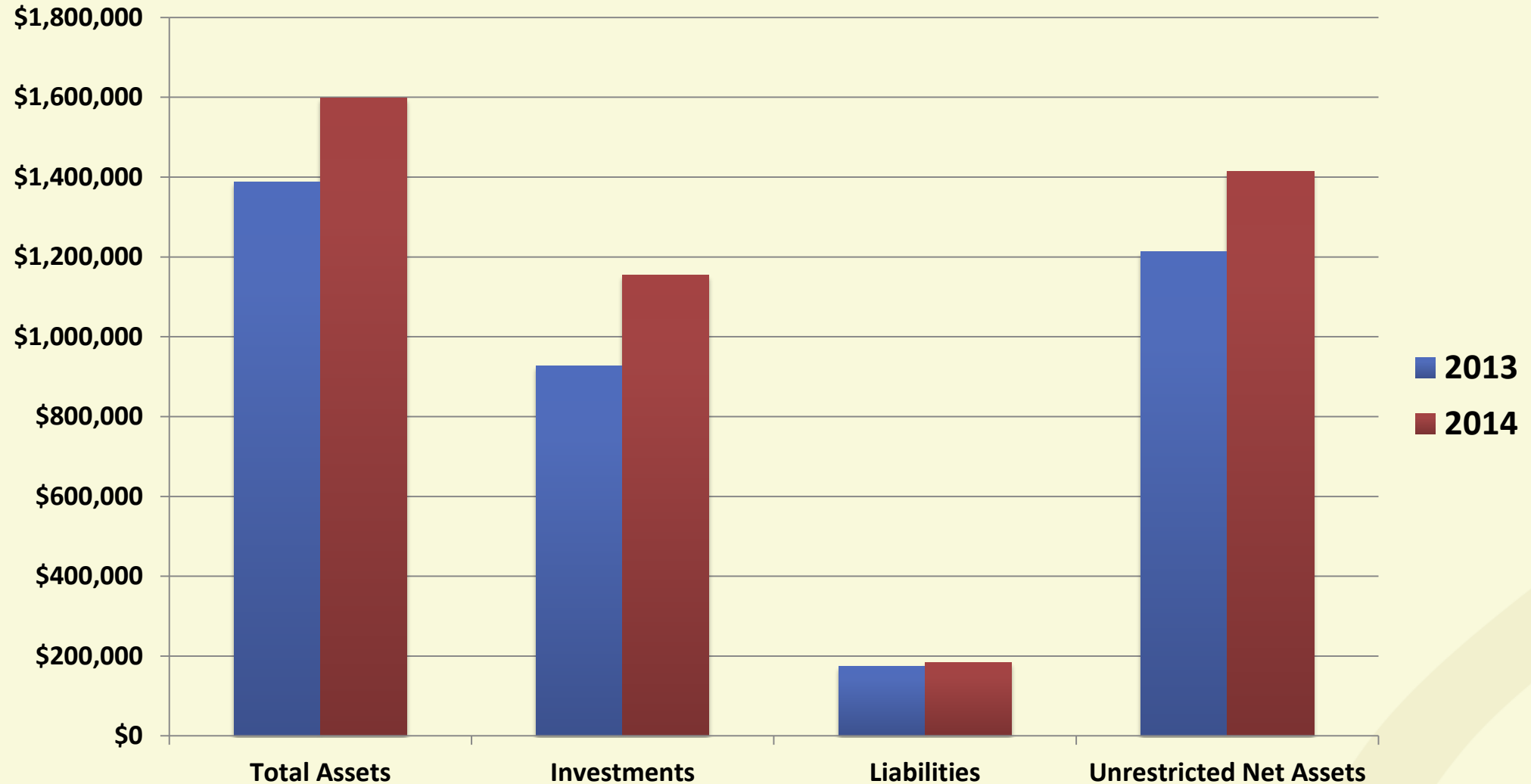


2014 Expenses





Audited Financial Statements (2013 & 2014)





Anne C. Madeo, MS, CGC
PRESIDENT'S REPORT



Nominating Committee Report

- 2015 Election Results
- New Director
- Public Member



Election Returns

Ballots distributed

- 3730

Ballots cast

- 968 (26%)



2015 Election Results

Congratulations to the newest member of the
ABGC Board of Directors:

Lori Erby, ScM, PhD, CGC





New Public Member

Amy Lytle





2016 Board of Directors Officers

- President: Beth Denne, MS, CGC
- President Elect: Karen Powell, MS, CGC
- Secretary/Treasurer: Anne C. Madeo, MS, CGC

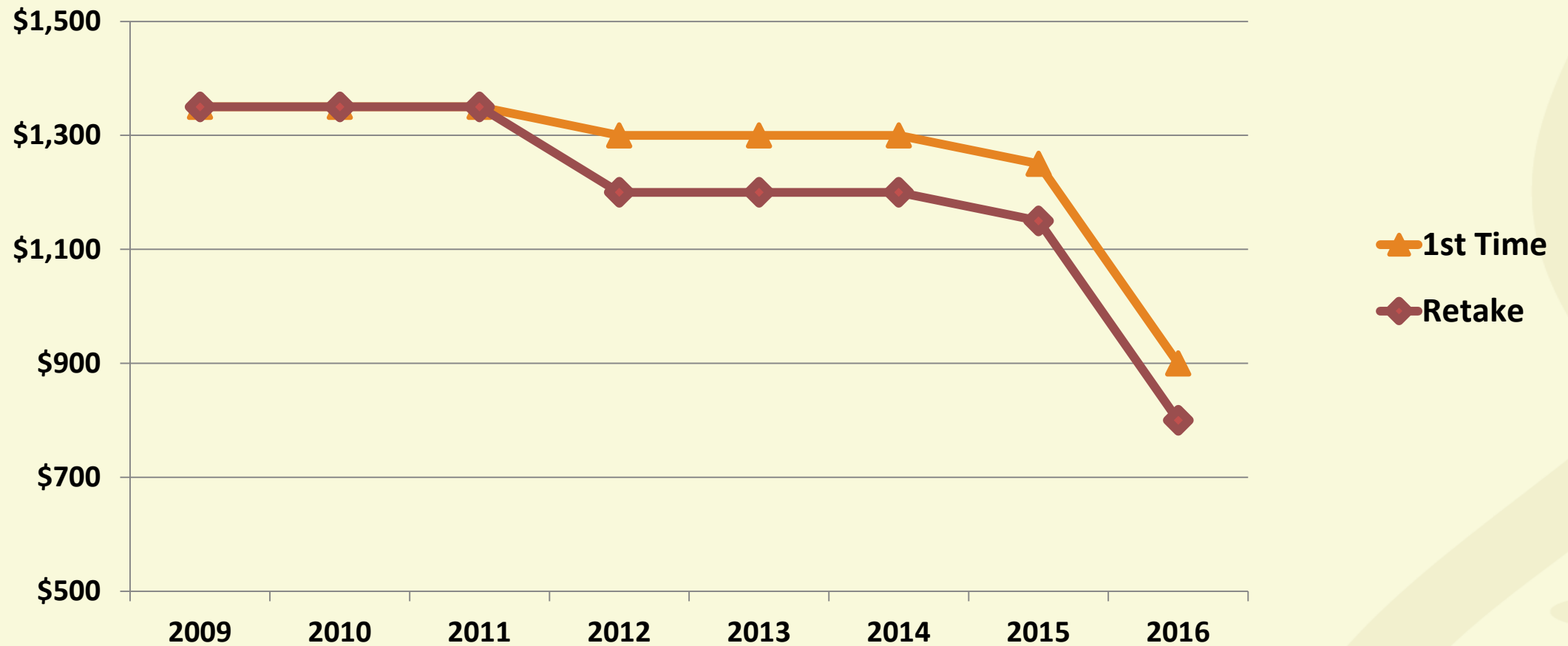


2016 Certification Exam Fees & Important Dates

- The 2016 *Exam Bulletin* is posted online (www.abgc.net)
 - Late application fee
 - Felony attestation form required for applicants in 2016
- Application requires one-time cost of:
 - \$900 (new)
 - \$800 (re-applicants)



Examination Fees, 2009-2016





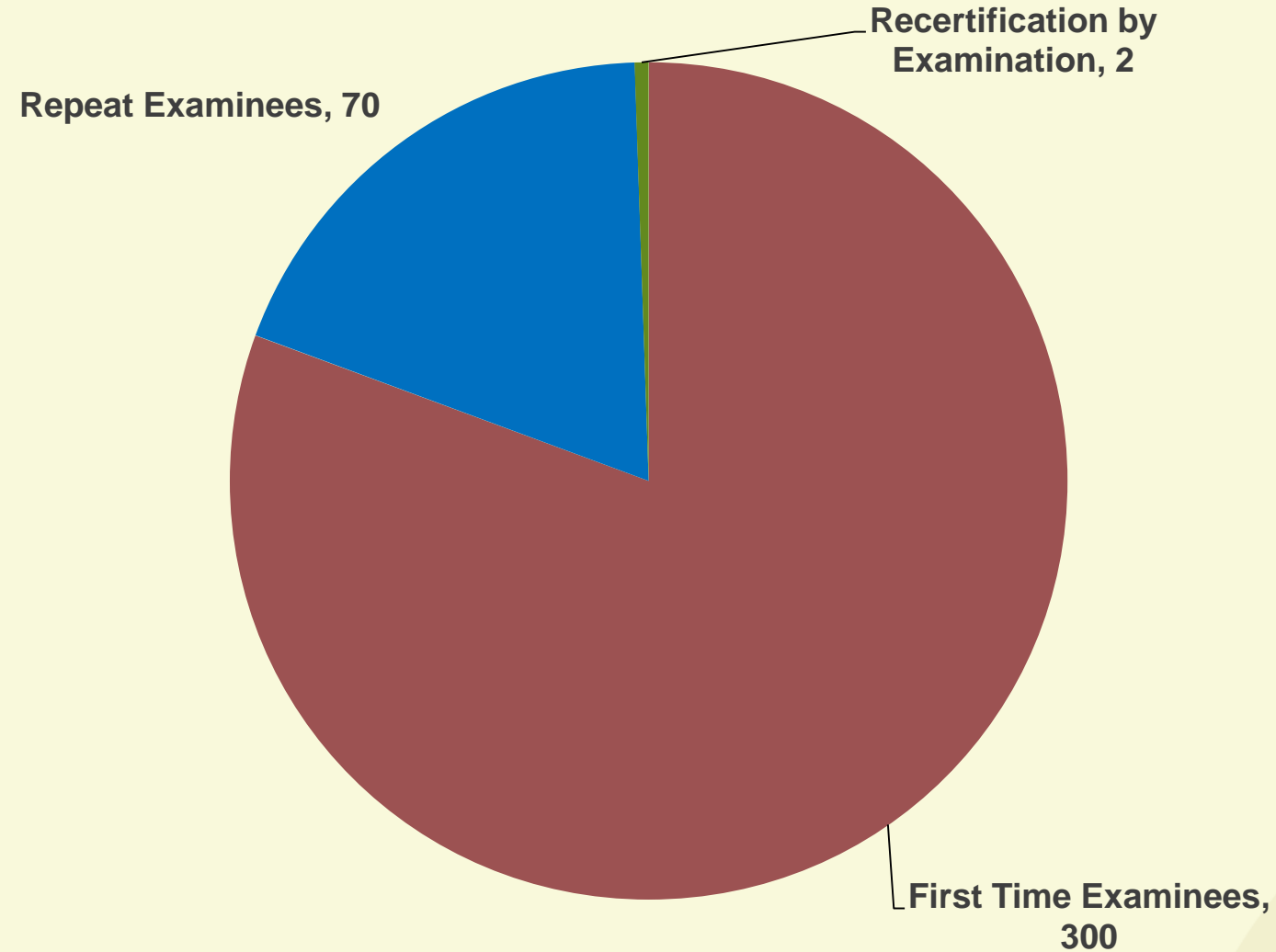
2016 Certification Exam Fees & Important Dates

- February 2016
 - Testing dates: February 1 through February 29, 2016
 - Now accepting applications
 - Application deadline: January 4, 2016
- August 2016
 - Testing dates: August 1 through August 31, 2016
 - Application deadline: July 1, 2016
 - Scheduling dates: April 1, 2016 through July 30, 2016



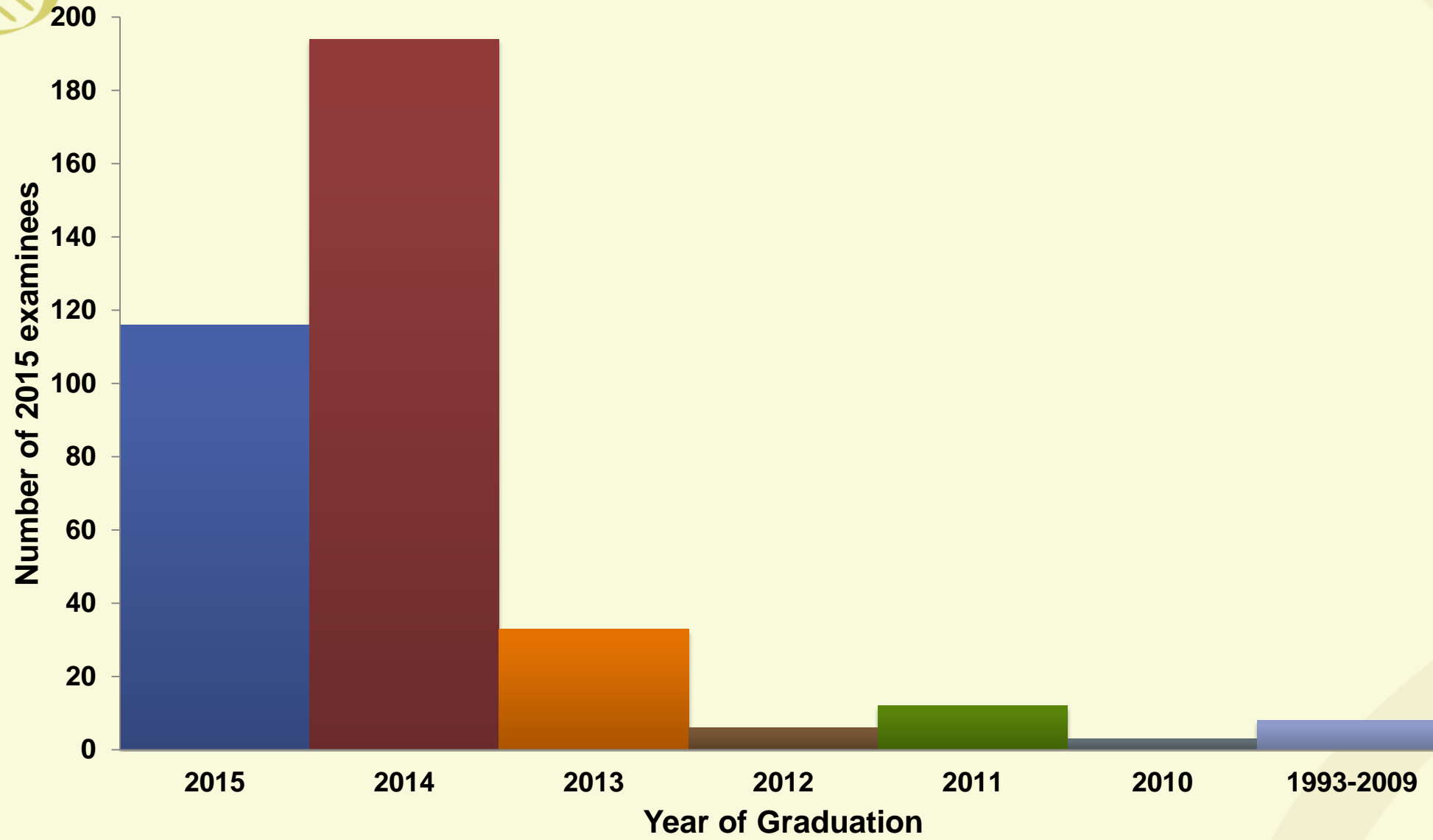
2015 Examinees

Total = 372



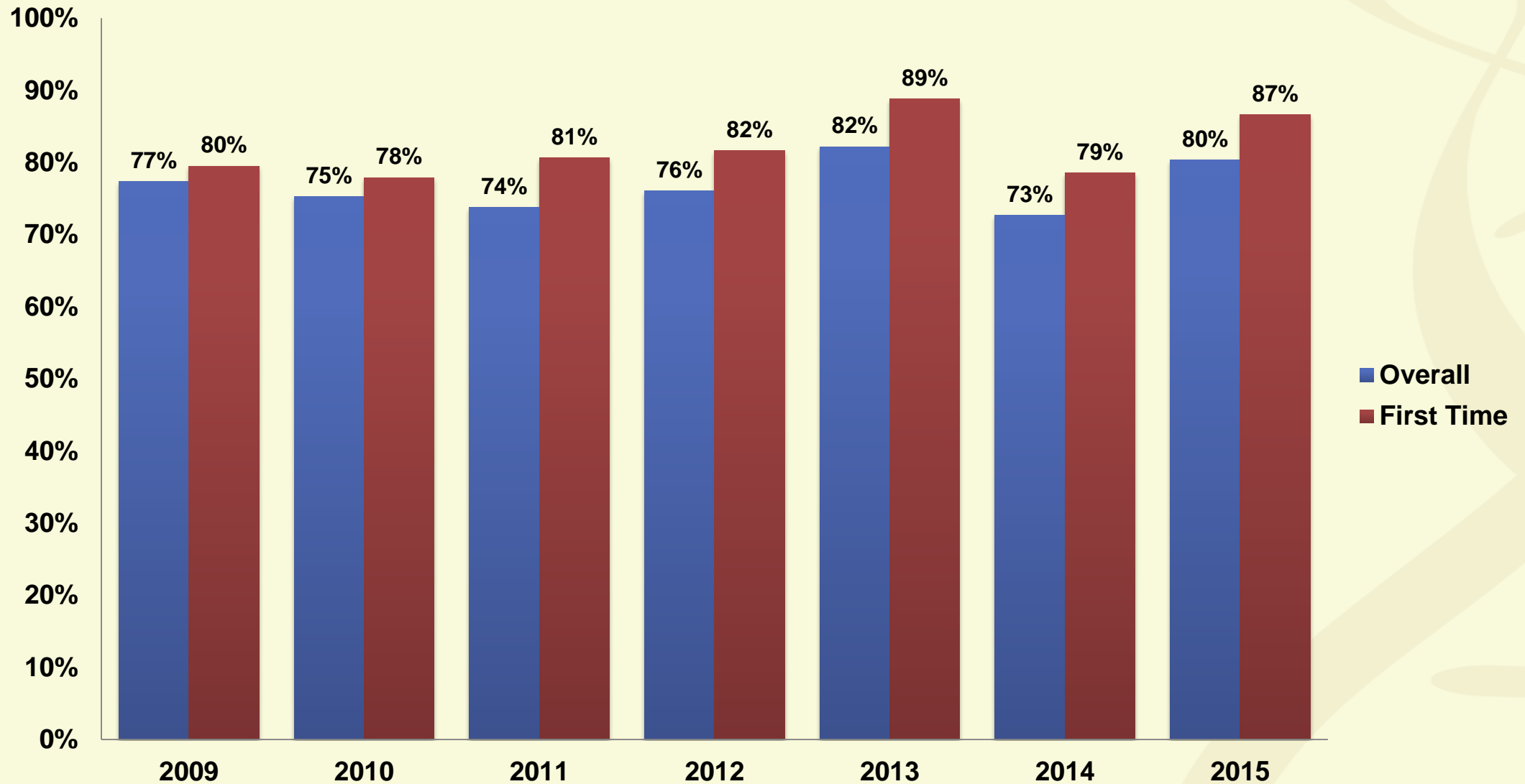


2015 Examinees by Graduation Year





Pass Rate, 2009-2015





2015 Accomplishments

- ✓ Achieved NCCA Accreditation
- ✓ Adopted Strategic Plan
- ✓ Bylaws Amendments
- ✓ Significantly Reduced Exam Fees for 2016
- ✓ Charged CEU Taskforce
- ✓ Charged Exam Eligibility Taskforce
- ✓ Developed Late Application Process
- ✓ 2nd Annual Newsletter
- ✓ Updated Online Recertification Software
- ✓ Leadership Training & Orientation



Bylaws Amendments

- Created two categories of members to ensure that
 - Diplomates still nominate the Board of Directors
 - ABGC remains in compliance with NY state regulations
- Removed the CEC Board Liaison as an officer position
- Edited bylaws to make them more internally consistent



Strategic Plan

- **CORE PURPOSE**

- Promote high standards in genetic counseling.

- **CORE VALUES**

- Integrity:

- Fair and objective decisions, transparency in interactions, and accountable stewardship.

- Responsiveness:

- Recognition of, and actions taken based on, emerging needs.

- Excellence:

- Delivering high value to the profession through rigorous evaluation standards.



Mission

- To protect the public by setting certification standards and providing leadership to promote the value of certified genetic counselors.



ACKNOWLEDGEMENTS



Finance Committee

- Troy Becker, MS, CGC
- Beth Denne, MS, CGC
- Susan Hahn, MS, CGC (Chair)
- Anne C. Madeo, MS, CGC
- Vanessa Rangel Miller, MS, CGC
- Lisa Amacker North, MS, CGC
- Sheila O'Neal, ABGC Executive Director



Nominating Committee

- Beth Denne, MS, CGC (Board Liaison)
- Sheetal Parmar, MS, CGC
- Kristin Paulyson Nunez, MS, CGC
- Carly Siskind, MS, CGC
- Maureen Smith, MS, CGC
- Matthew Thomas, MS, ScM, CGC (Chair)



Certification Exam Committee

- Carrie Castonguay, MS, CGC
- Curtis Coughlin, MS, MBe, CGC
- Becki Hulinsky, MS, CGC
- Debbie Keelean-Fuller, MSc, CGC
- Robin King, MS, CGC
- Heather MacLeod, MS, CGC
- Juliann McConnell, MS, CGC
- Elizabeth Platt, MGC, CGC
- Karen Powell, MS, CGC (Co-Chair, Board Liaison)
- Heather Wetzel, MS, CGC (Chair)



Item Writers

- Courtney Nichols Berrios, ScM, CGC
- Adam Buchanan, MS, MPH, CGC
- Kara Bui, MS, CGC
- Jill Dolinsky, MS, CGC
- Carrie Castonguay, MS, CGC
- Kathleen Collins, MS, CGC
- Kayla Czape, MS, CGC
- Kelly Donahue, MS, CGC
- Jennifer Eichmeyer, MS, CGC
- Carrie Guy, MS, CGC
- Kristen Hanson, MS, CGC
- Beth Hudson, MS, CGC
- Debra Keelean-Fuller, MSc, CGC
- Jessica Mester, MS, CGC
- Erin Oehler, MS, CGC
- Amy Paine, MS, CGC
- Kirsten Rasmussen, MS, CGC
- Victoria Raymond, MS, CGC
- Thereasa Rich, MS, CGC
- Amy Shikany, MS, CGC
- Cecile Skrzynia, MS, CGC
- Heather Stalker, MS, CGC
- Kristen Sund, PhD, MS, CGC



CEU Taskforce

- Sharon Aufox, MS, CGC, Chair and Board Liaison
- Nancy Callanan, MS, CGC, ACGC Representative
- Emily Edelman, MS, CGC, Diplomate at Large
- Corrine M. Fillman, MS, CGC, Diplomate at Large
- Katherine Hughey, ABGC Staff Liaison
- Khalida Liaquat, MS, CGC, Diplomate at Large
- Sara Riordan, MS, CGC, NSGC Board Liaison to Education Committee
- Diana Tully, MS, CGC, NSGC CEU Subcommittee Chair



Exam Eligibility Taskforce

- Leslie Cohen, MS, CGC, Chair
- Richard Dineen, MS, CGC, Diplomate at large
- Jennifer Fitzpatrick, MS, CGC, Diplomate at large
- Stephanie Kieffer, MS, CGC, Board Liaison
- Sarah Noblin, MS, CGC, ACGC Representative
- Sheila O'Neal, ABGC Staff Liaison
- Beverly Yashar, PhD, MS, CGC, Diplomate at large



Join Us

Friday, October 23rd at 10:15 am for plenary session:

*Behind the Scenes: Development and Scoring of the
ABGC Certification Examination*

Presented by Daniel Breidenbach, PhD

AMP Psychometrics Program Director



Q&A

