



ABGC

2016 Annual Business Meeting

Beth Denne, President

September 30, 2016
1:45 pm – 2:15 pm

PO Box 14216 | Lenexa, KS 66285 | Phone: 913.222.8661 | Fax: 913.222.8605 | abgc.net



ABGC Agenda

- Welcome & Introductions
- Treasurer's Report
- President's Report
 - Election results
 - 2016 Examination Update
 - 2016 Examination Report
 - 2016 Accomplishments
 - New/Ongoing Initiatives for 2017
- Open for Questions



The 2016 ABGC Board of Directors



Left to right:

First row

Sheila O'Neal, Executive Director
Stephanie Kieffer, MS, CGC, Director At-Large
Anne C. Madeo, MS, CGC, Treasurer
Karen Powell, MS, CGC, President Elect

Second row

Lori Erby, ScM, PhD, CGC, Director At-Large
Amy Lytle, Public Member
Sharon Aufox, MS, CGC, CEC Board Liaison
Beth Denne, MS, CGC, President



Thank You!

Anne C. Madeo, MS, CGC





Anne C. Madeo, MS, CGC
TREASURER'S REPORT

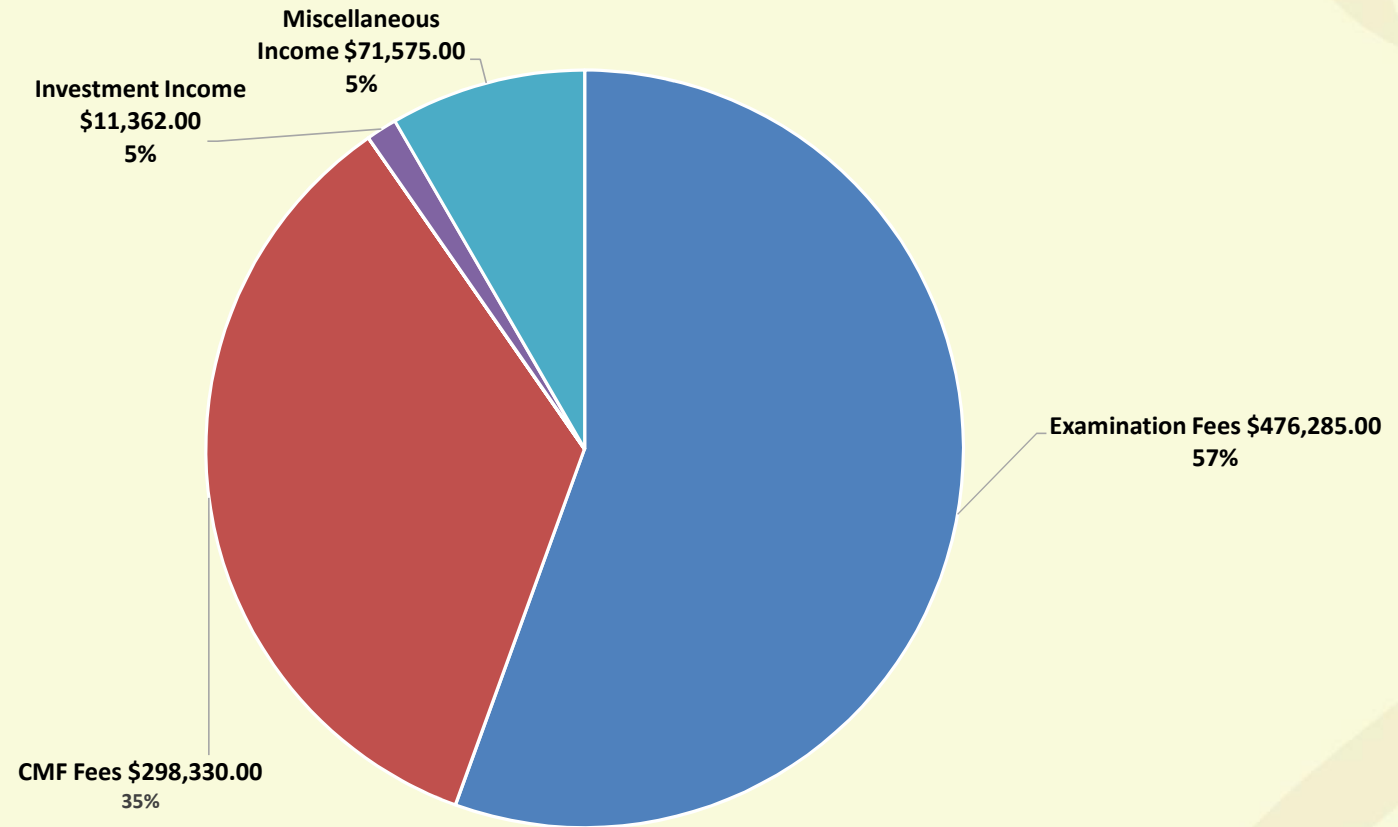


Treasurer's Report

- Revenues
- Expenses
- 2015 Year End Financial Statements

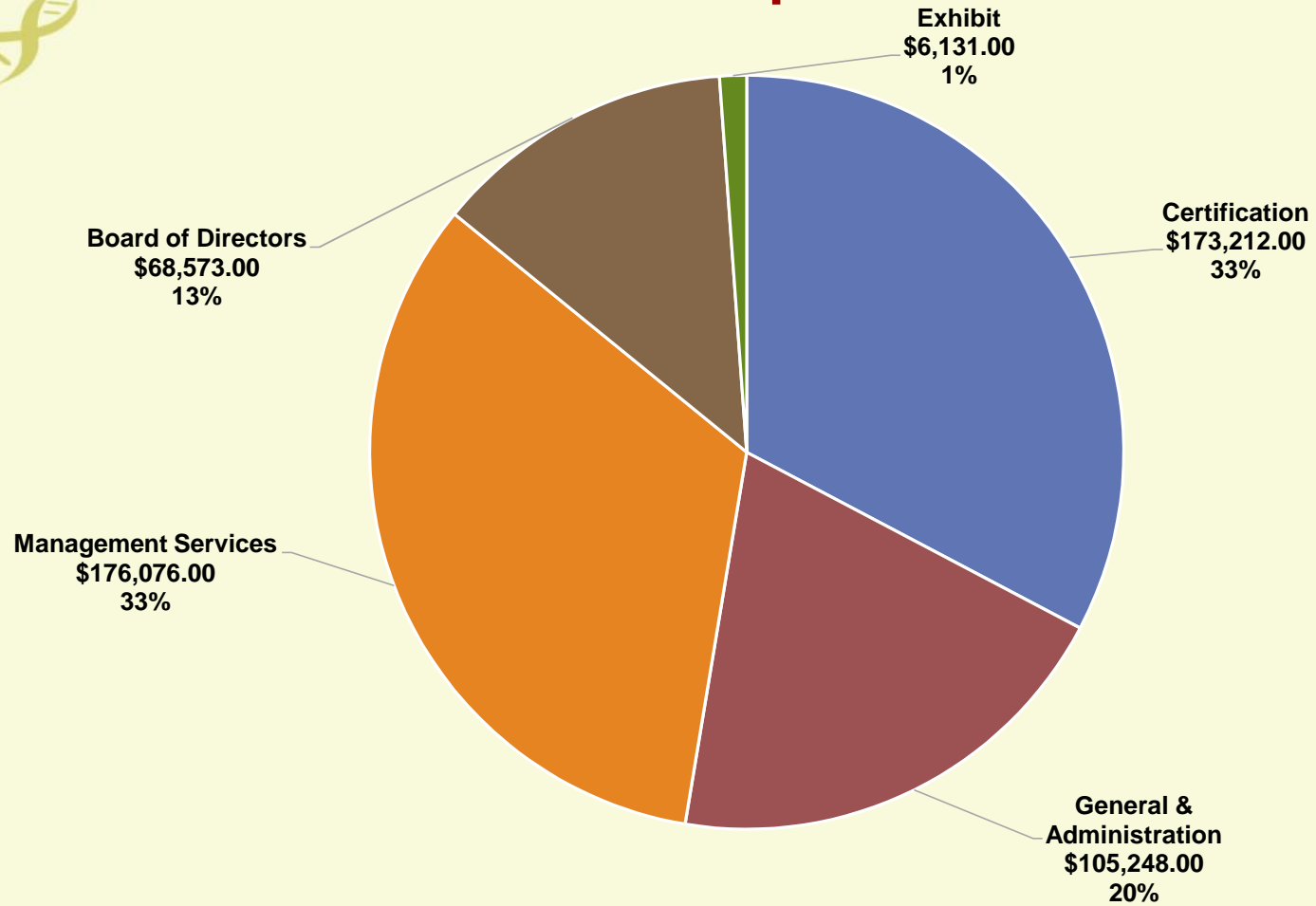


2015 Revenue



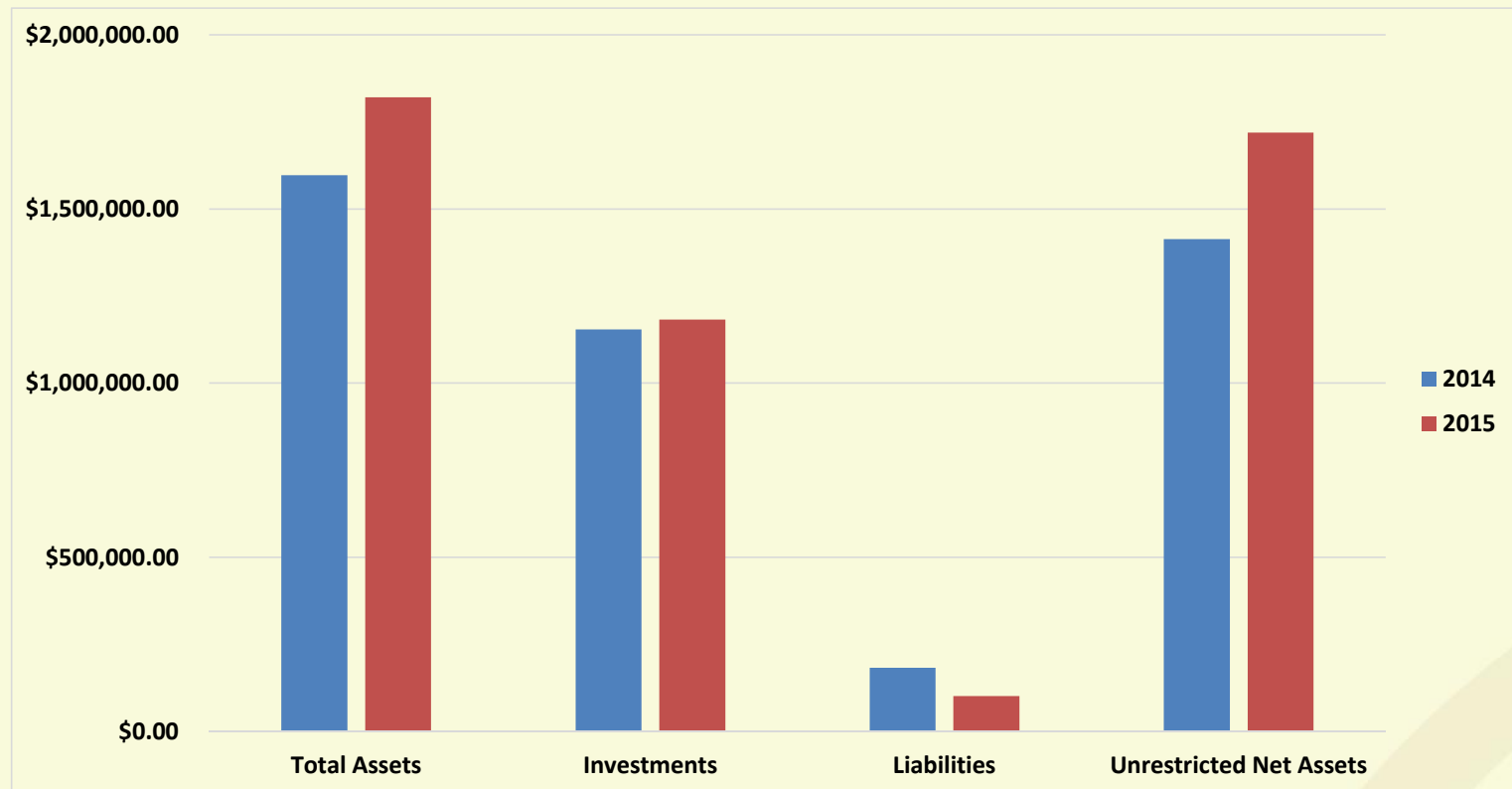


2015 Expenses





Audited Financial Statements (2014 & 2015)





Thank You!

Beth Denne, MS, CGC





Beth Denne, MS, CGC

PRESIDENT'S REPORT



Nominating Committee Report

- 2015 Election Results
- New Directors
- Public Member



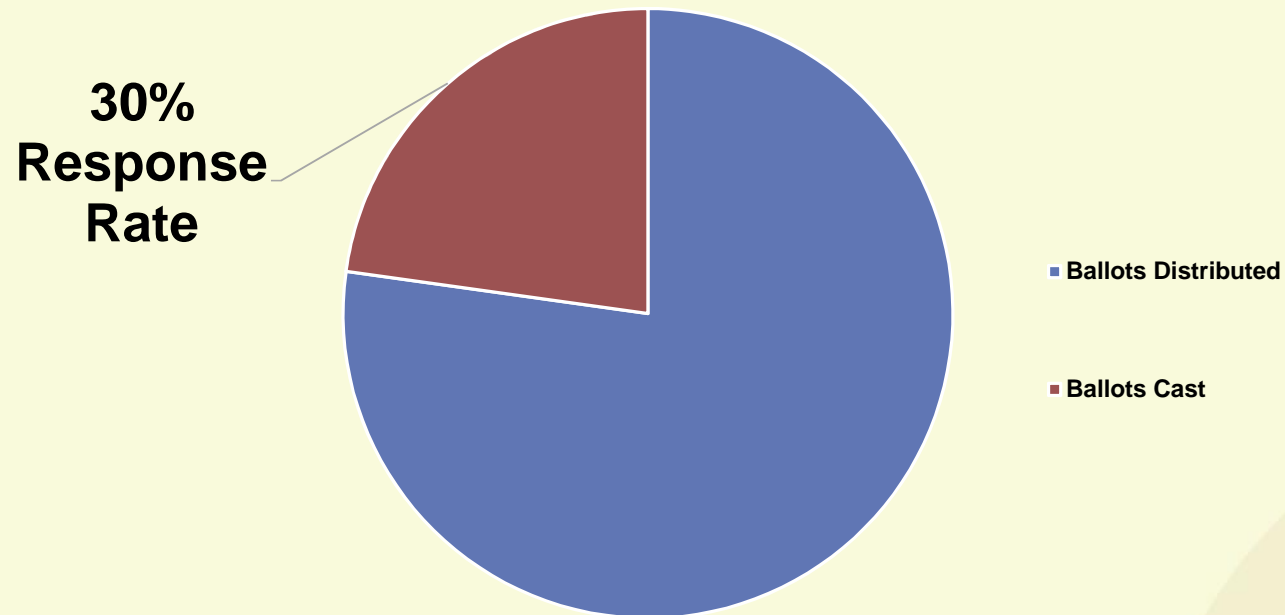
Election Returns

Ballots distributed

- 4,365

Ballots cast

- 1,289





2016 Election Results

Congratulations to the newest members of the
ABGC Board of Directors:

Adam Buchanan, MS , CGC

Ana Morales, MS, CGC





Public Member

Amy Lytle





2017 Board of Directors Officers

- President: Karen Powell, MS, CGC
- President Elect: Sharon Aufox, MS, CGC
- Treasurer: Stephanie Kieffer, MS, CGC



2017 Certification Exam Fees & Important Dates

- The *Exam Bulletin* is posted online (www.abgc.net)
- Application requires one-time cost of:
 - \$900 (new)
 - \$800 (re-applicants)

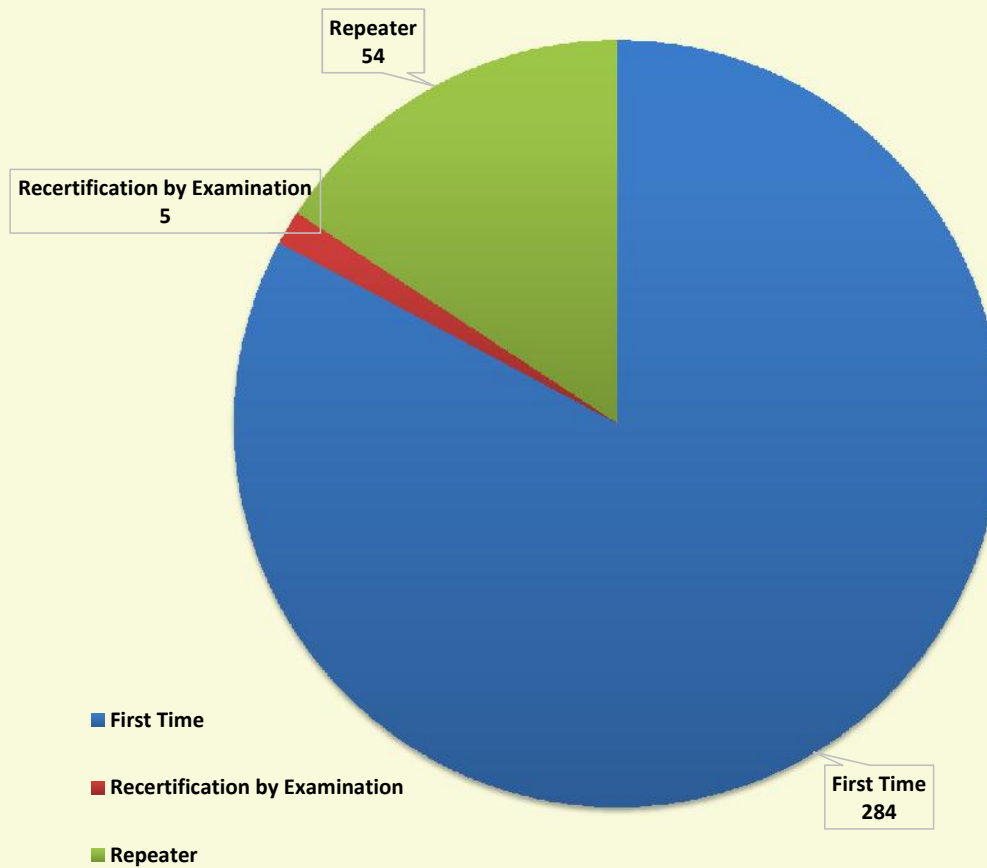


2017 Exam Fees & Important Dates

- February 2017
 - Testing dates: February 1 through February 29, 2017
 - Now accepting applications
 - Application deadline: January 3, 2017
 - Scheduling dates: October 31, 2016 through January 31, 2017
- August 2017
 - Testing dates: August 1 through August 31, 2017
 - Now accepting applications
 - Application deadline: July 1, 2017
 - Scheduling dates: April 1, 2017 through July 31, 2017
- **Coming Soon:** Online Application & Electronic Eligibility Verification

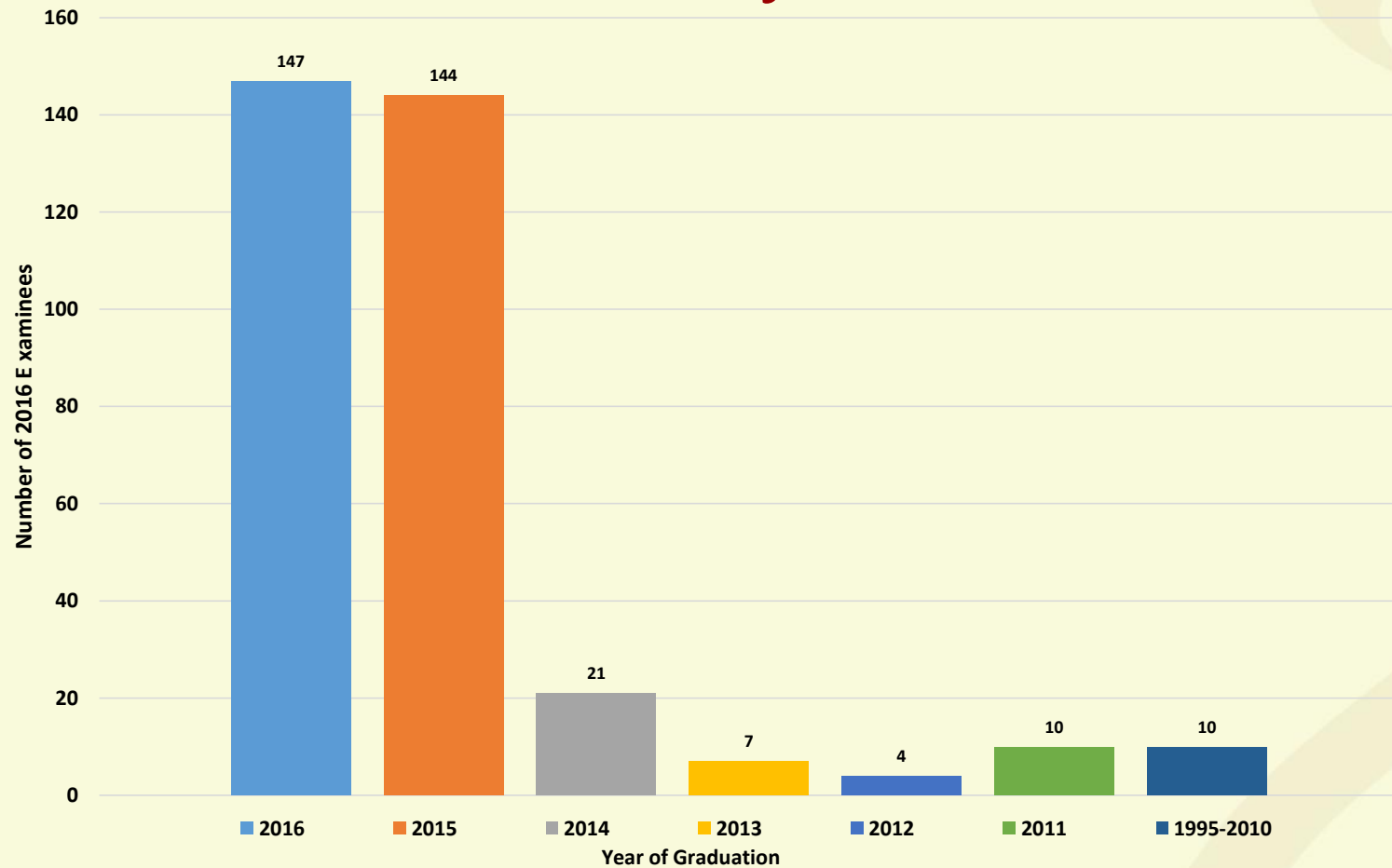


2016 Examinees Total = 343



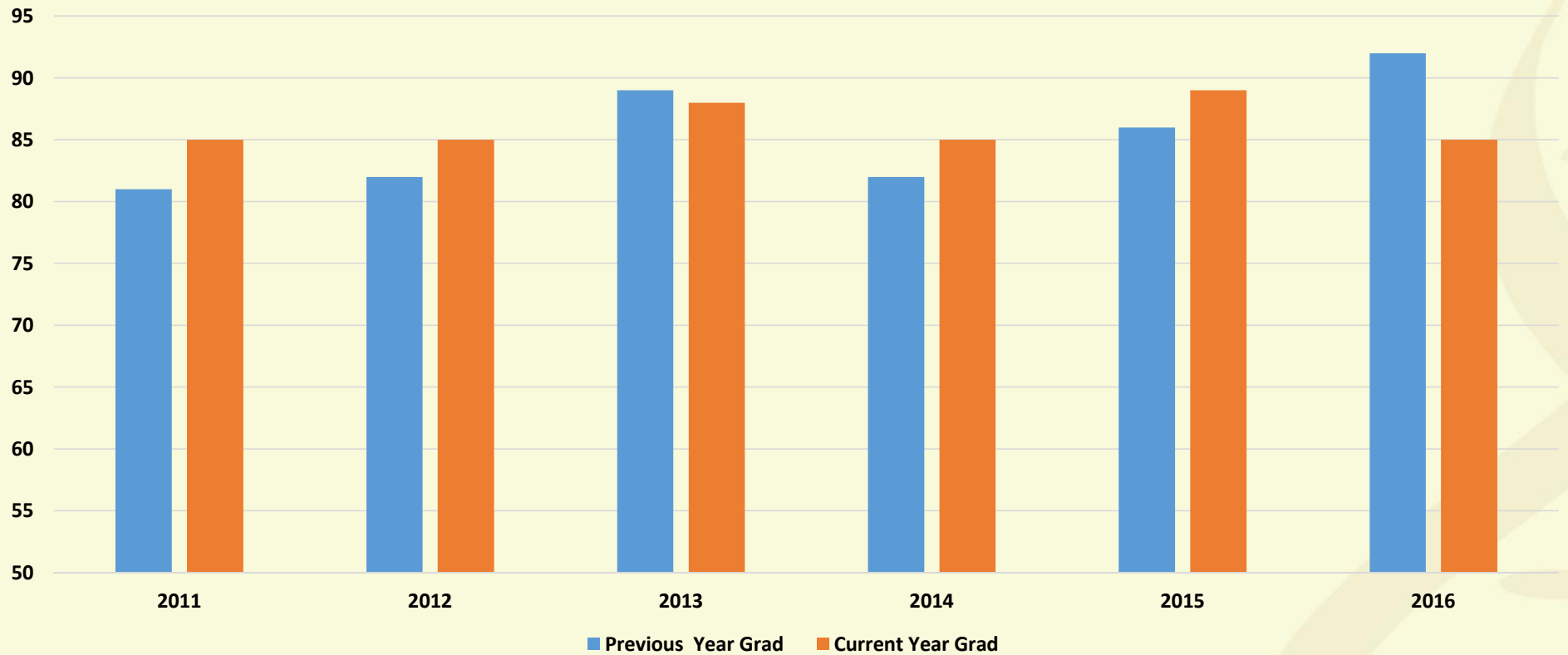


2016 Examinees by Graduation Year



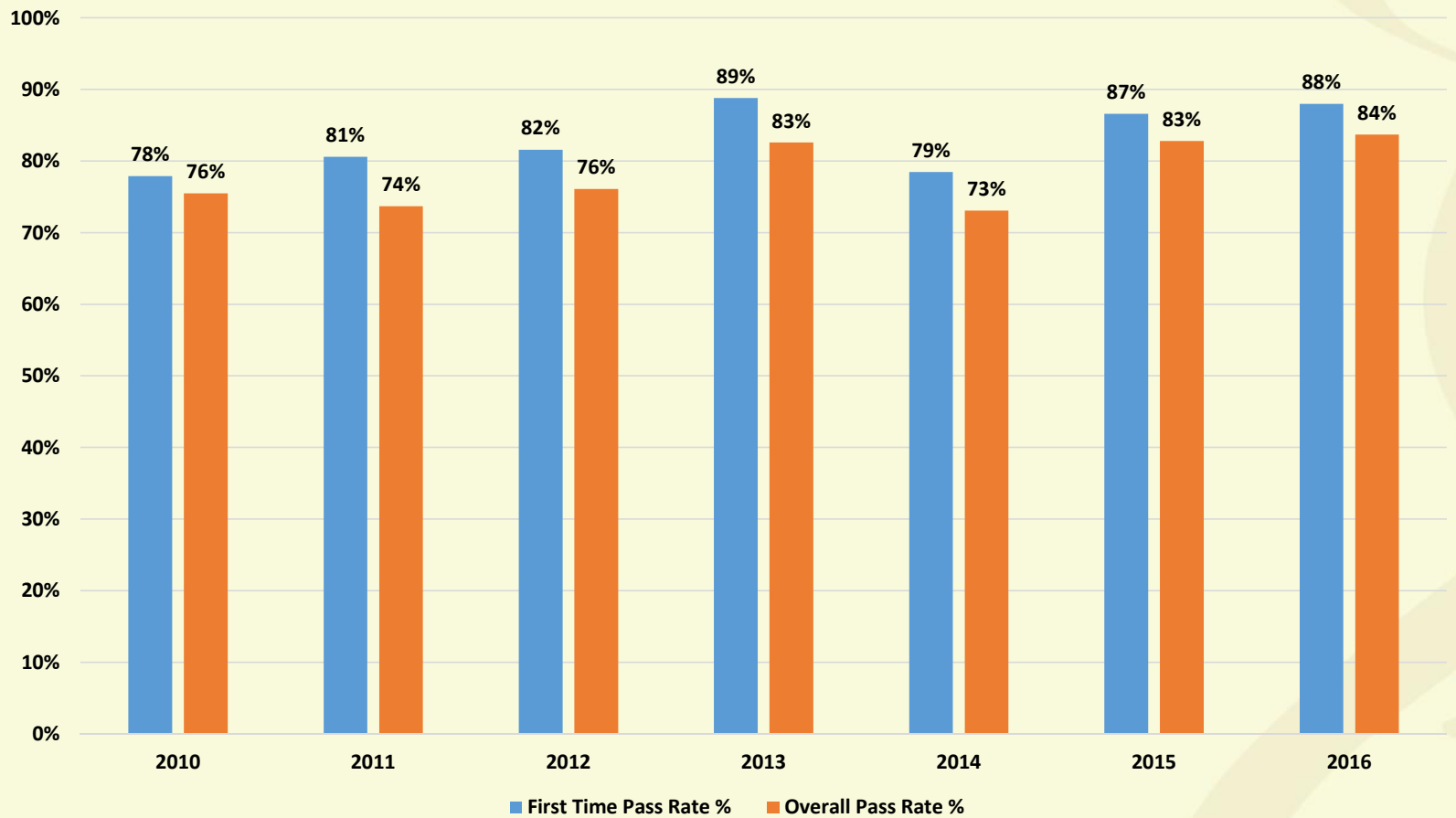


New Graduate First Time Pass Rate





Pass Rate, 2010-2016





2016 Accomplishments

✓ Refined Strategic Plan



2016-2019 Strategic Plan

CORE PURPOSE

Promote high standards in genetic counseling.

MISSION

To protect the public by setting certification standards and providing leadership to promote the value of certified genetic counselors.

STRATEGIC GOALS

- ABGC will be a key organization providing leadership within the genetic counseling profession.
- CGCs will be leaders in the provision of genetic counseling.
- Certified genetic counselors will be integrated into the provision of genetic services within healthcare.



2016 Accomplishments

- ✓ Continued work on improving our governance structure
- ✓ Completed work of the CEU Taskforce
- ✓ Completed work of the Exam Eligibility Taskforce
- ✓ Completed RFP for Management Services
 - ✓ Testing Services company transition
- ✓ Workforce Working Group/Workforce Study Participation
- ✓ 3rd Annual Newsletter
- ✓ Clarified language around minimum number of Category 1 CEUs for recertification
- ✓ Presented/attended the Transnational Alliance for Genetic Counseling (TAGC) Allied Genetics Conference conference in May
- ✓ Submitted joint comment letter to respond to the Equal Employment Opportunity Commission's (EEOC) proposed rule changes to Title II of the Genetic Information Nondiscrimination Act of 2008
- ✓ FDA Response



Looking Forward...2017

- **Website Redesign**
 - Marketing and Public Relations
- **Online Application System & Electronic Eligibility Database for program directors**
- **Practice Analysis**
 - Phase I: Advisory Committee Meeting I
 - Phase II: Survey Distribution and Results Compilation
 - Phase III: Advisory Committee Meeting II
 - Phase IV: Documentation of Practice Analysis Process



ACKNOWLEDGEMENTS



Finance Committee

- Beth Denne, MS, CGC
- Susan Hahn, MS, CGC
- Liz Kearney, MS, CGC
- Stephanie Kieffer, MS, CGC
- Anne C. Madeo, MS, CGC (Chair)
- Sheila O'Neal, ABGC Executive Director



Nominating Committee

- Lori Erby, MS, CGC (Board Liaison)
- Cheryl Harper, MS, CGC
- Gillian Hooker, MS, CGC
- Kristin Paulyson Nunez, MS, CGC (Chair)
- Taylor Sale, MS, CGC
- Heather Wetzel, MS, CGC



Certification Exam Committee

- Sharon Aufox, MS, CGC (Co-Chair, Board Liaison)
- Kara Bui, MS, CGC
- Carrie Castonguay, MS, CGC
- Kelly Donahue, MS, CGC
- Beth Hudson, MS, CGC
- Debbie Keelean-Fuller, MSc, CGC
- Robin King, MS, CGC
- Heather MacLeod, MS, CGC
- Juliann McConnell, MS, CGC
- Elizabeth Platt, MGC, CGC (Chair)



Item Writers

- Courtney Nichols Berrios, ScM, CGC
- Kelly Bontempo, MS, CGC
- Adam Buchanan, MS, MPH, CGC
- Kara Bui, MS, CGC
- Jill Dolinsky, MS, CGC
- Kathleen Collins, MS, CGC
- Kayla Czape, MS, CGC
- Beth Dillinger, MS, CGC
- Kelly Donahue, MS, CGC
- Jennifer Eichmeyer, MS, CGC
- Carrie Guy, MS, CGC
- Kristen Hanson, MS, CGC
- Beth Hudson, MS, CGC
- Lauren Lichten, MS, CGC
- Kristin Nunez, MS, CGC
- Erin Oehler, MS, CGC
- Amy Paine, MS, CGC
- Vivian Pan, MS, CGC
- Kirsten Rasmussen, MS, CGC
- Victoria Raymond, MS, CGC
- Amy Shikany, MS, CGC
- Heather Stalker, MS, CGC



CEU Taskforce

- Sharon Aufox, MS, CGC, Chair and Board Liaison
- Nancy Callanan, MS, CGC, ACGC Representative
- Emily Edelman, MS, CGC, Diplomate at Large
- Corrine M. Fillman, MS, CGC, Diplomate at Large
- Katherine Hughey, ABGC Staff Liaison
- Khalida Liaquat, MS, CGC, Diplomate at Large
- Sara Riordan, MS, CGC, NSGC Board Liaison to Education Committee
- Diana Tully, MS, CGC, NSGC CEU Subcommittee Chair



Exam Eligibility Taskforce

- Leslie Cohen, MS, CGC, Chair
- Richard Dineen, MS, CGC, Diplomate at large
- Jennifer Fitzpatrick, MS, CGC, Diplomate at large
- Stephanie Kieffer, MS, CGC, Board Liaison
- Sarah Noblin, MS, CGC, ACGC Representative
- Sheila O'Neal, ABGC Staff Liaison
- Beverly Yashar, PhD, MS, CGC, Diplomate at large



Q&A

PRIZE DRAWING